



Andy Beshear
GOVERNOR

TRANSPORTATION CABINET

200 Mero Street
Frankfort, Kentucky 40601

Jim Gray
SECRETARY

July 12, 2024

CALL NO. 110
CONTRACT ID NO. 241307
ADDENDUM #1

Subject: Muhlenberg County, STP 9031 (033)
Letting July 18, 2024

Revise - Proposal Pages 2, 35-48, 54, 55 of 55, Plan Sheet R2B and R3
Delete - Proposal Page 50

Proposal revisions are available at <http://transportation.ky.gov/Construction-Procurement/>.

If you have any questions, please contact us at 502-564-3500.

Sincerely,

A handwritten signature in black ink that reads "Rachel Mills".

Rachel Mills, P.E.
Director
Division of Construction Procurement

RM:ce
Enclosures

TABLE OF CONTENTS

PART I	SCOPE OF WORK
	<ul style="list-style-type: none">• PROJECT(S), COMPLETION DATE(S), & LIQUIDATED DAMAGES• CONTRACT NOTES• STATE CONTRACT NOTES• ASPHALT PAVEMENT RIDE QUALITY CAT B• COMPACTION OPTION B• TREE REMOVAL• PIPELINE INSPECTION• NON-TRACKING TACK COAT• RIGHT OF WAY CERTIFICATION• UTILITY IMPACT & RAIL CERTIFICATION NOTES• COMMUNICATING ALL PROMISES
PART II	SPECIFICATIONS AND STANDARD DRAWINGS
	<ul style="list-style-type: none">• STANDARD AND SUPPLEMENTAL SPECIFICATIONS• [SN-11N] LONGITUDINAL PAVEMENT JOINT ADHESIVE
PART III	EMPLOYMENT, WAGE AND RECORD REQUIREMENTS
	<ul style="list-style-type: none">• LABOR AND WAGE REQUIREMENTS• EXECUTIVE BRANCH CODE OF ETHICS• KENTUCKY EQUAL EMPLOYMENT OPPORTUNITY ACT OF 1978 LOCALITY / STATE• PROJECT WAGE RATES LOCALITY 1 / FEDERAL• NOTICE OF REQUIREMENT FOR AFFIRMATIVE ACTION TO ENSURE EEO MUHLENBERG
PART IV	INSURANCE
PART V	BID ITEMS

"General Decision Number: KY20240040 07/05/2024

Superseded General Decision Number: KY20230040

State: Kentucky

Construction Type: Highway

Counties: Allen, Ballard, Butler, Caldwell, Calloway, Carlisle, Christian, Crittenden, Daviess, Edmonson, Fulton, Graves, Hancock, Henderson, Hickman, Hopkins, Livingston, Logan, Lyon, Marshall, McCracken, McLean, Muhlenberg, Ohio, Simpson, Todd, Trigg, Union, Warren and Webster Counties in Kentucky.

HIGHWAY CONSTRUCTION PROJECTS (excluding tunnels, building structures in rest area projects & railroad construction; bascule, suspension & spandrel arch bridges designed for commercial navigation, bridges involving marine construction; and other major bridges).

Note: Contracts subject to the Davis-Bacon Act are generally required to pay at least the applicable minimum wage rate required under Executive Order 14026 or Executive Order 13658. Please note that these Executive Orders apply to covered contracts entered into by the federal government that are subject to the Davis-Bacon Act itself, but do not apply to contracts subject only to the Davis-Bacon Related Acts, including those set forth at 29 CFR 5.1(a)(1).

<p>If the contract is entered into on or after January 30, 2022, or the contract is renewed or extended (e.g., an option is exercised) on or after January 30, 2022:</p>	<ul style="list-style-type: none"> . Executive Order 14026 generally applies to the contract. . The contractor must pay all covered workers at least \$17.20 per hour (or the applicable wage rate listed on this wage determination, if it is higher) for all hours spent performing on the contract in 2024.
<p>If the contract was awarded on or between January 1, 2015 and January 29, 2022, and the contract is not renewed or extended on or after January 30, 2022:</p>	<ul style="list-style-type: none"> . Executive Order 13658 generally applies to the contract. . The contractor must pay all covered workers at least \$12.90 per hour (or the applicable wage rate listed on this wage determination, if it is higher) for all hours spent performing on that contract in 2024.

The applicable Executive Order minimum wage rate will be adjusted annually. If this contract is covered by one of the Executive Orders and a classification considered necessary for performance of work on the contract does not appear on this wage determination, the contractor must still submit a conformance request.

Additional information on contractor requirements and worker protections under the Executive Orders is available at <http://www.dol.gov/whd/govcontracts>.

Modification Number	Publication Date
0	01/05/2024
1	02/09/2024
2	03/15/2024
3	05/31/2024
4	07/05/2024

BRIN0004-002 06/01/2023

BALLARD, BUTLER, CALDWELL, CARLISLE, CRITTENDEN, DAVIESS, EDMONSON, FULTON, GRAVES, HANCOCK, HENDERSON, HICKMAN, HOPKINS, LIVINGSTON, LYON, MARSHALL, MCCRACKEN, MCLEAN, MUHLENBERG, OHIO, UNION, and WEBSTER COUNTIES

	Rates	Fringes
BRICKLAYER		
Ballard, Caldwell, Carlisle, Crittenden, Fulton, Graves, Hickman, Livingston, Lyon, Marshall, and McCracken Counties.....	\$ 34.17	19.60
Butler, Edmonson, Hopkins, Muhlenberg, and Ohio Counties.....	\$ 32.28	15.95
Daviess, Hancock, Henderson, McLean, Union, and Webster Counties.....	\$ 34.17	19.60

 BRTN0004-005 06/01/2023

ALLEN, CALLOWAY, CHRISTIAN, LOGAN, SIMPSON, TODD, TRIGG, and WARREN COUNTIES

	Rates	Fringes
BRICKLAYER.....	\$ 32.28	15.95

 CARP0357-002 04/01/2024

	Rates	Fringes
CARPENTER.....	\$ 32.90	23.37
DIVER.....	\$ 49.73	23.37
PILEDRIVERMAN.....	\$ 33.40	23.37

 ELEC0369-006 05/28/2023

BUTLER, EDMONSON, LOGAN, TODD & WARREN COUNTIES:

	Rates	Fringes
ELECTRICIAN.....	\$ 35.39	20.45

 * ELEC0429-001 06/01/2024

ALLEN & SIMPSON COUNTIES:

	Rates	Fringes
ELECTRICIAN.....	\$ 34.92	14.75

ELEC0816-002 07/01/2023		

BALLARD, CALDWELL, CALLOWAY, CARLISLE, CHRISTIAN, CRITTENDEN,
 FULTON (Except a 5 mile radius of City Hall in Fulton), GRAVES,
 HICKMAN, LIVINGSTON, LYON, MARSHALL, MCCRACKEN & TRIGG COUNTIES:

	Rates	Fringes
ELECTRICIAN.....	\$ 34.94	28%+8.35

Cable spicers receive \$.25 per hour additional.		

ELEC1701-003 07/01/2023		

DAVISS, HANCOCK, HENDERSON, HOPKINS, MCLEAN, MUHLENBERG, OHIO,
 UNION & WEBSTER COUNTIES:

	Rates	Fringes
ELECTRICIAN.....	\$ 35.60	8.35+30.8%

Cable spicers receive \$.25 per hour additional.		

ELEC1925-002 01/01/2024		

FULTON COUNTY (Up to a 5 mile radius of City Hall in Fulton):

	Rates	Fringes
CABLE SPLICER.....	\$ 28.20	15.27
ELECTRICIAN.....	\$ 27.95	15.26

* ENGI0181-017 07/01/2024		

	Rates	Fringes
POWER EQUIPMENT OPERATOR		
GROUP 1.....	\$ 40.05	19.10
GROUP 2.....	\$ 37.19	19.10
GROUP 3.....	\$ 37.64	19.10
GROUP 4.....	\$ 36.87	19.10

OPERATING ENGINEER CLASSIFICATIONS

GROUP 1 - A-Frame Winch Truck; Auto Patrol; Backfiller;
 Batch Plant; Bituminous Paver; Bituminous Transfer
 Machine; Boom Cat; Bulldozer; Mechanic; Cableway; Carry-All
 Scoop; Carry Deck Crane; Central Compressor Plant; Cherry
 Picker; Clamshell; Concrete Mixer (21 cu. ft. or Over);
 Concrete Paver; Truck-Mounted Concrete Pump; Core Drill;
 Crane; Crusher Plant; Derrick; Derrick Boat; Ditching &
 Trenching Machine; Dragline; Dredge Operator; Dredge
 Engineer; Elevating Grader & Loaders; Grade-All; Gurries;
 Heavy Equipment Robotics Operator/Mechanic; High Lift;
 Hoe-Type Machine; Hoist (Two or More Drums); Hoisting
 Engine (Two or More Drums); Horizontal Directional Drill
 Operator; Hydrocrane; Hyster; KeCal Loader; LeTourneau;

Locomotive; Mechanic; Mechanically Operated Laser Screed; Mechanic Welder; Mucking Machine; Motor Scraper; Orangepeel Bucket; Overhead Crane; Piledriver; Power Blade; Pumpcrete; Push Dozer; Rock Spreader, attached to equipment; Rotary Drill; Roller (Bituminous); Rough Terrain Crane; Scarifier; Scoopmobile; Shovel; Side Boom; Subgrader; Tailboom; Telescoping Type Forklift; Tow or Push Boat; Tower Crane (French, German & other types); Tractor Shovel; Truck Crane; Tunnel Mining Machines, including Moles, Shields or similar types of Tunnel Mining Equipment

GROUP 2 - Air Compressor (Over 900 cu. ft. per min.); Bituminous Mixer; Boom Type Tamping Machine; Bull Float; Concrete Mixer (Under 21 cu. ft.); Dredge Engineer; Electric Vibrator; Compactor/Self-Propelled Compactor; Elevator (One Drum or Buck Hoist); Elevator (When used to Hoist Building Material); Finish Machine; Firemen & Hoist (One Drum); Flexplane; Forklift (Regardless of Lift Height); Form Grader; Joint Sealing Machine; Outboard Motor Boat; Power Sweeper (Riding Type); Roller (Rock); Ross Carrier; Skid Mounted or Trailer Mounted Concrete Pump; Skid Steer Machine with all Attachments; Switchman or Brakeman; Throttle Valve Person; Tractair & Road Widening Trencher; Tractor (50 H.P. or Over); Truck Crane Oiler; Tugger; Welding Machine; Well Points;& Whirley Oiler

GROUP 3 -All Off Road Material Handling Equipment, including Articulating Dump Trucks; Greaser on Grease Facilities servicing Heavy Equipment

GROUP 4 - Bituminous Distributor; Burlap & Curing Machine; Cement Gun; Concrete Saw; Conveyor; Deckhand Oiler; Grout Pump; Hydraulic Post Driver; Hydro Seeder; Mud Jack; Oiler; Paving Joint Machine; Power Form Handling Equipment; Pump; Roller (Earth); Steerman; Tamping Machine; Tractor (Under 50 H.P.); & Vibrator

CRANES - with booms 150 ft. & Over (Including JIB), and where the length of the boom in combination with the length of the piling equals or exceeds 150 ft. - \$1.00 above Group 1 rate

EMPLOYEES ASSIGNED TO WORK BELOW GROUND LEVEL ARE TO BE PAID 10% ABOVE BASIC WAGE RATE. THIS DOES NOT APPLY TO OPEN CUT WORK.

 * IRON0070-005 06/01/2024

BUTLER COUNTY (Eastern eighth, including the Townships of Decker, Lee & Tilford);
 EDMONSON COUNTY (Northern three-fourths, including the Townships of Asphalt, Bee Spring, Brownsville, Grassland, Huff, Kyrock, Lindseyville, Mammoth Cave, Ollie, Prosperity, Rhoda, Sunfish & Sweden)

	Rates	Fringes
IRONWORKER		
Structural; Ornamental;		
Reinforcing; Precast		
Concrete Erectors.....	\$ 34.59	25.00

 IRON0103-004 04/01/2023

DAVISS, HANCOCK, HENDERSON, HOPKINS, MCLEAN, OHIO, UNION & WEBSTER COUNTIES
 BUTLER COUNTY (Townships of Aberdeen, Bancock, Casey, Dexterville, Dunbar, Elfie, Gilstrap, Huntsville, Logansport, Monford, Morgantown, Provo, Rochester, South Hill & Welchs Creek);
 CALDWELL COUNTY (Northeastern third, including the Township of Creswell);
 CHRISTIAN COUNTY (Northern third, including the Townships of Apex, Crofton, Kelly, Mannington & Wynns);
 CRITTENDEN COUNTY (Northeastern half, including the Townships of Grove, Mattoon, Repton, Shady Grove & Tribune);
 MUHLENBERG COUNTY (Townships of Bavier, Beech Creek Junction, Benton, Brennen, Browder, Central City, Cleaton, Depoy, Drakesboro, Eunis, Graham, Hillside, Luzerne, Lynn City, Martwick, McNary, Millport, Moorman, Nelson, Paradise, Powderly, South Carrollton, Tarina & Weir)

	Rates	Fringes
Ironworkers:.....	\$ 31.99	26.20

* IRON0492-003 05/01/2024		

ALLEN, LOGAN, SIMPSON, TODD & WARREN COUNTIES
 BUTLER COUNTY (Southern third, including the Townships of Boston, Berrys Lick, Dimple, Jetson, Quality, Sharer, Sugar Grove & Woodbury);
 CHRISTIAN COUNTY (Eastern two-thirds, including the Townships of Bennettstown, Casky, Herndon, Hopkinsville, Howell, Masonville, Pembroke & Thompsonville);
 EDMONSON COUNTY (Southern fourth, including the Townships of Chalybeate & Rocky Hill);
 MUHLENBERG COUNTY (Southern eighth, including the Townships of Dunnior, Penrod & Rosewood)

	Rates	Fringes
Ironworkers:.....	\$ 33.73	16.38

IRON0782-006 08/01/2023		

BALLARD, CALLOWAY, CARLISLE, FULTON, GRAVES, HICKMAN, LIVINGSTON, LYON, MARSHALL, MCCRACKEN & TRIGG COUNTIES
 CALDWELL COUNTY (Southwestern two-thirds, including the Townships of Cedar Bluff, Cider, Claxton, Cobb, Crowtown, Dulaney, Farmersville, Fredonia, McGowan, Otter Pond & Princeton);
 CHRISTIAN COUNTY (Western third, Excluding the Townships of Apex, Crofton, Kelly, Mannington, Wynns, Bennettstown, Casky, Herndon, Hopkinsville, Howell, Masonville, Pembroke & Thompsonville);
 CRITTENDEN COUNTY (Southwestern half, including the Townships of Crayne, Dycusburg, Frances, Marion, Mexico, Midway, Sheridan & Told)

	Rates	Fringes
Ironworkers:		
Projects with a total contract cost of		

\$20,000,000.00 or above.....\$	34.75	25.52
All Other Work.....\$	33.01	25.52

 LAB00189-005 07/01/2023

BALLARD, CALLOWAY, CARLISLE, FULTON, GRAVES, HICKMAN,
 LIVINGSTON, LYON, MARSHALL & MCCRACKEN COUNTIES

	Rates	Fringes
Laborers:		
GROUP 1.....\$	23.96	17.57
GROUP 2.....\$	24.21	17.57
GROUP 3.....\$	24.26	17.57
GROUP 4.....\$	24.86	17.57

LABORER CLASSIFICATIONS

GROUP 1 - Aging & Curing of Concrete; Asbestos Abatement Worker; Asphalt Plant; Asphalt; Batch Truck Dump; Carpenter Tender; Cement Mason Tender; Cleaning of Machines; Concrete; Demolition; Dredging; Environmental - Nuclear, Radiation, Toxic & Hazardous Waste - Level D; Flagperson; Grade Checker; Hand Digging & Hand Back Filling; Highway Marker Placer; Landscaping, Mesh Handler & Placer; Puddler; Railroad; Rip-rap & Grouter; Right-of-Way; Sign, Guard Rail & Fence Installer; Signal Person; Sound Barrier Installer; Storm & Sanitary Sewer; Swamper; Truck Spotter & Dumper; Wrecking of Concrete Forms; General Cleanup

GROUP 2 - Batter Board Man (Sanitary & Storm Sewer); Brickmason Tender; Mortar Mixer Operator; Scaffold Builder; Burner & Welder; Bushhammer; Chain Saw Operator; Concrete Saw Operator; Deckhand Scow Man; Dry Cement Handler; Environmental - Nuclear, Radiation, Toxic & Hazardous Waste - Level C; Forklift Operator for Masonary; Form Setter; Green Concrete Cutting; Hand Operated Grouter & Grinder Machine Operator; Jackhammer; Pavement Breaker; Paving Joint Machine; Pipelayer; Plastic Pipe Fusion; Power Driven Georgia Buggy & Wheel Barrow; Power Post Hole Digger; Precast Manhole Setter; Walk-Behind Tamper; Walk-Behind Trencher; Sand Blaster; Concrete Chipper; Surface Grinder; Vibrator Operator; Wagon Driller

GROUP 3 - Asphalt Luteman & Raker; Gunnite Nozzleman; Gunnite Operator & Mixer; Grout Pump Operator; Blaster; Side Rail Setter; Rail Paved Ditches; Screw Operator; Tunnel (Free Air); Water Blaster

GROUP 4 - Caisson Worker (Free Air); Cement Finisher; Environmental - Nuclear, Radiation, Toxic & Hazardous Waste - Levels A & B; Miner & Driller (Free Air); Tunnel Blaster; & Tunnel Mucker (Free Air); Directional & Horizontal Boring; Air Track Drillers (All Types); Powdermen & Blasters; Troxler & Concrete Tester if Laborer is Utilized

 LAB00189-006 07/01/2023

ALLEN, BUTLER, CALDWELL, CHRISTIAN, DAVIESS, EDMONSON, HANCOCK,
 HOPKINS, LOGAN, MCLEAN, MUHLENBERG, OHIO, SIMPSON, TODD, TRIGG
 & WARREN COUNTIES

Rates Fringes

Laborers:

GROUP 1.....	\$ 23.96	17.57
GROUP 2.....	\$ 24.26	17.57
GROUP 3.....	\$ 24.21	17.57
GROUP 4.....	\$ 24.86	17.57

LABORER CLASSIFICATIONS

GROUP 1 - Aging & Curing of Concrete; Asbestos Abatement Worker; Asphalt Plant; Asphalt; Batch Truck Dump; Carpenter Tender; Cement Mason Tender; Cleaning of Machines; Concrete; Demolition; Dredging; Environmental - Nuclear, Radiation, Toxic & Hazardous Waste - Level D; Flagperson; Grade Checker; Hand Digging & Hand Back Filling; Highway Marker Placer; Landscaping, Mesh Handler & Placer; Puddler; Railroad; Rip-rap & Grouter; Right-of-Way; Sign, Guard Rail & Fence Installer; Signal Person; Sound Barrier Installer; Storm & Sanitary Sewer; Swamper; Truck Spotter & Dumper; Wrecking of Concrete Forms; General Cleanup

GROUP 2 - Batter Board Man (Sanitary & Storm Sewer); Brickmason Tender; Mortar Mixer Operator; Scaffold Builder; Burner & Welder; Bushhammer; Chain Saw Operator; Concrete Saw Operator; Deckhand Scow Man; Dry Cement Handler; Environmental - Nuclear, Radiation, Toxic & Hazardous Waste - Level C; Forklift Operator for Masonary; Form Setter; Green Concrete Cutting; Hand Operated Grouter & Grinder Machine Operator; Jackhammer; Pavement Breaker; Paving Joint Machine; Pipelayer; Plastic Pipe Fusion; Power Driven Georgia Buggy & Wheel Barrow; Power Post Hole Digger; Precast Manhole Setter; Walk-Behind Tamper; Walk-Behind Trencher; Sand Blaster; Concrete Chipper; Surface Grinder; Vibrator Operator; Wagon Driller

GROUP 3 - Asphalt Luteman & Raker; Gunnite Nozzleman; Gunnite Operator & Mixer; Grout Pump Operator; Blaster; Side Rail Setter; Rail Paved Ditches; Screw Operator; Tunnel (Free Air); Water Blaster

GROUP 4 - Caisson Worker (Free Air); Cement Finisher; Environmental - Nuclear, Radiation, Toxic & Hazardous Waste - Levels A & B; Miner & Driller (Free Air); Tunnel Blaster; & Tunnel Mucker (Free Air); Directional & Horizontal Boring; Air Track Drillers (All Types); Powdermen & Blasters; Troxler & Concrete Tester if Laborer is Utilized

 LAB00561-001 07/01/2023

CRITTENDEN, HENDERSON, UNION & WEBSTER COUNTIES

Rates Fringes

Laborers:

GROUP 1.....	\$ 24.81	17.60
GROUP 2.....	\$ 25.06	17.60
GROUP 3.....	\$ 25.11	17.60
GROUP 4.....	\$ 25.71	17.60

LABORER CLASSIFICATIONS

GROUP 1 - Aging & Curing of Concrete; Asbestos Abatement Worker; Asphalt Plant; Asphalt; Batch Truck Dump; Carpenter

Tender; Cement Mason Tender; Cleaning of Machines;
 Concrete; Demolition; Dredging; Environmental - Nuclear,
 Radiation, Toxic & Hazardous Waste - Level D; Flagperson;
 Grade Checker; Hand Digging & Hand Back Filling; Highway
 Marker Placer; Landscaping, Mesh Handler & Placer; Puddler;
 Railroad; Rip-rap & Grouter; Right-of-Way; Sign, Guard Rail
 & Fence Installer; Signal Person; Sound Barrier Installer;
 Storm & Sanitary Sewer; Swamper; Truck Spotter & Dumper;
 Wrecking of Concrete Forms; General Cleanup

GROUP 2 - Batter Board Man (Sanitary & Storm Sewer);
 Brickmason Tender; Mortar Mixer Operator; Scaffold Builder;
 Burner & Welder; Bushhammer; Chain Saw Operator; Concrete
 Saw Operator; Deckhand Scow Man; Dry Cement Handler;
 Environmental - Nuclear, Radiation, Toxic & Hazardous Waste
 - Level C; Forklift Operator for Masonary; Form Setter;
 Green Concrete Cutting; Hand Operated Grouter & Grinder
 Machine Operator; Jackhammer; Pavement Breaker; Paving
 Joint Machine; Pipelayer; Plastic Pipe Fusion; Power Driven
 Georgia Buggy & Wheel Barrow; Power Post Hole Digger;
 Precast Manhole Setter; Walk-Behind Tamper; Walk-Behind
 Trencher; Sand Blaster; Concrete Chipper; Surface
 Grinder; Vibrator Operator; Wagon Driller

GROUP 3 - Asphalt Luteman & Raker; Gunnite Nozzleman; Gunnite
 Operator & Mixer; Grout Pump Operator; Blaster; Side Rail
 Setter; Rail Paved Ditches; Screw Operator; Tunnel (Free
 Air); Water Blaster

GROUP 4 - Caisson Worker (Free Air); Cement Finisher;
 Environmental - Nuclear, Radiation, Toxic & Hazardous Waste
 - Levels A & B; Miner & Driller (Free Air); Tunnel Blaster;
 & Tunnel Mucker (Free Air); Directional & Horizontal
 Boring; Air Track Drillers (All Types); Powdermen &
 Blasters; Troxler & Concrete Tester if Laborer is Utilized

 PAIN0032-002 09/01/2023

BALLARD COUNTY

	Rates	Fringes
Painters:		
Bridges.....	\$ 36.12	20.97
All Other Work.....	\$ 33.82	20.97

Spray, Blast, Steam, High & Hazardous (Including Lead
 Abatement) and All Epoxy - \$1.00 Premium

 PAIN0118-003 06/01/2014

EDMONSON COUNTY:

	Rates	Fringes
Painters:		
Brush & Roller.....	\$ 18.50	11.97
Spray, Sandblast, Power Tools, Waterblast & Steam		
Cleaning.....	\$ 19.50	11.97

 PAIN0156-006 04/01/2024

DAVISS, HANCOCK, HENDERSON, MCLEAN, OHIO, UNION & WEBSTER
 COUNTIES

	Rates	Fringes
Painters:		
BRIDGES		
GROUP 1.....	\$ 30.77	20.30
GROUP 3.....	\$ 31.77	20.30
GROUP 4.....	\$ 35.00	20.30
ALL OTHER WORK:		
GROUP 1.....	\$ 29.62	20.30
GROUP 2.....	\$ 30.37	20.30
GROUP 3.....	\$ 30.62	20.30
GROUP 4.....	\$ 31.77	20.30

PAINTER CLASSIFICATIONS

GROUP 1 - Brush & Roller

GROUP 2 - Plasterers

GROUP 3 - Spray; Sandblast; Power Tools; Waterblast;
 Steamcleaning; Brush & Roller of Mastics, Creosotes, Kwinch
 Koate & Coal Tar Epoxy

GROUP 4 - Spray of Mastics, Creosotes, Kwinch Koate & Coal
 Tar Epoxy

 * PAIN0500-002 06/01/2024

CALDWELL, CALLOWAY, CARLISLE, CHRISTIAN, CRITTENDEN, FULTON,
 GRAVES, HICKMAN, HOPKINS, LIVINGSTON, LYON, MARSHALL, MCCRACKEN
 & TRIGG COUNTIES:

	Rates	Fringes
Painters:		
Bridges.....	\$ 30.75	15.50
All Other Work.....	\$ 24.50	15.50

Waterblasting units with 3500 PSI and above - \$.50 premium
 Spraypainting and all abrasive blasting - \$1.00 premium
 Work 40 ft. and above ground level - \$1.00 premium

 PLUM0184-002 07/01/2023

BALLARD, CALDWELL, CALLOWAY, CARLISLE, CHRISTIAN, CRITTENDEN,
 FULTON, GRAVES, HICKMAN, LIVINGSTON, LYON, MARSHALL, MCCRACKEN
 and TRIGG COUNTIES

	Rates	Fringes
Plumber; Steamfitter.....	\$ 39.86	18.98

 PLUM0502-004 08/01/2021

ALLEN, BUTLER, EDMONSON, SIMPSON & WARREN

	Rates	Fringes
--	-------	---------

Plumber; Steamfitter.....\$ 38.07 20.78

PLUM0633-002 07/01/2022

DAVISS, HANCOCK, HENDERSON, HOPKINS, LOGAN, MCLEAN,
 MUHLENBERG, OHIO, TODD, UNION & WEBSTER COUNTIES:

	Rates	Fringes
PLUMBER/PIPEFITTER.....	\$ 33.97	19.30

TEAM0089-003 03/31/2024

ALLEN, BUTLER, EDMONSON, LOGAN, SIMPSON & WARREN COUNTIES

	Rates	Fringes
Truck drivers:		
Zone 1:		
Group 1.....	\$ 23.53	27.39
Group 2.....	\$ 23.70	27.39
Group 3.....	\$ 23.78	27.39
Group 4.....	\$ 23.80	27.39

GROUP 1 - Greaser; Tire Changer

GROUP 2 - Truck Mechanic; Single Axle Dump; Flat Bed; All Terrain Vehicles when used to haul materials; Semi Trailer or Pole Trailer when used to pull building materials and equipment; Tandem Axle Dump; Driver of Distributors

GROUP 3 - Mixer All Types

GROUP 4 - Winch and A-Frame when used in transporting materials; Ross Carrier; Fork Lift when used to transport building materials; Driver on Pavement Breaker; Euclid and Other Heavy Earth Moving Equipment; Low Boy; Articulator Cat; Five Axle Vehicle

 TEAM0215-003 03/31/2024

DAVISS, HANCOCK, HENDERSON, HOPKINS, MCLEAN, MUHLENBERG, OHIO
 & WEBSTER COUNTIES

	Rates	Fringes
TRUCK DRIVER		
Group 1.....	\$ 25.15	27.39
Group 2.....	\$ 25.38	27.39
Group 3.....	\$ 25.45	27.39
Group 4.....	\$ 25.46	27.39

GROUP 1: Greaser, Tire Changer

GROUP 2: Truck Mechanic

GROUP 3: Single Axle Dump; Flat Bed; All Terrain Vehicle when used to haul materials; Semi Trailer or Pole Trailer when used to pull building materials and equipment; Tandem Axle Dump; Driver of Distributors; Mixer All Types

GROUP 4: Euclid and other heavy earth moving equipment; Low Boy; Articulator Cat; 5 Axle Vehicle; Winch and A- Frame when used in transporting materials; Ross Carrier; Fork Lift when used to transport building materials; Driver on Pavement Breaker

TEAM0236-001 03/31/2024

BALLARD, CALDWELL, CALLOWAY, CARLISLE, CHRISTIAN, CRITTENDEN, FULTON, GRAVES, HICKMAN, LIVINGSTON, LYON, MARSHALL, MCCRACKEN, TODD & TRIGG COUNTIES

	Rates	Fringes
TRUCK DRIVER		
Group 1.....	\$ 23.52	27.39
Group 2.....	\$ 23.70	27.39
Group 3.....	\$ 23.70	27.39
Group 4.....	\$ 23.78	27.39
Group 5.....	\$ 23.80	27.39

GROUP 1: Greaser, Tire Changer

GROUP 2: Truck Mechanic

GROUP 3: Single Axle Dump; Flat Bed; All Terrain Vehicle when used to haul materials; Semi Trailer or Pole Trailer when used to pull building materials and equipment; Tandem Axle Dump; Drivers of Distributors

GROUP 4: Euclid and other heavy earth moving equipment; Low Boy; Articulator Cat; Five Axle Vehicle; Winch and A-Frame when used in transporting materials; Ross Carrier

GROUP 5: Mixer All Types

WELDERS - Receive rate prescribed for craft performing operation to which welding is incidental.

=====

Note: Executive Order (EO) 13706, Establishing Paid Sick Leave for Federal Contractors applies to all contracts subject to the Davis-Bacon Act for which the contract is awarded (and any solicitation was issued) on or after January 1, 2017. If this contract is covered by the EO, the contractor must provide employees with 1 hour of paid sick leave for every 30 hours they work, up to 56 hours of paid sick leave each year. Employees must be permitted to use paid sick leave for their own illness, injury or other health-related needs, including preventive care; to assist a family member (or person who is like family to the employee) who is ill, injured, or has other health-related needs, including preventive care; or for reasons resulting from, or to assist a family member (or person who is like family to the employee) who is a victim of, domestic violence, sexual assault, or stalking. Additional information on contractor requirements and worker protections under the EO is available at <https://www.dol.gov/agencies/whd/government-contracts>.

Unlisted classifications needed for work not included within

the scope of the classifications listed may be added after award only as provided in the labor standards contract clauses (29CFR 5.5 (a) (1) (iii)).

The body of each wage determination lists the classification and wage rates that have been found to be prevailing for the cited type(s) of construction in the area covered by the wage determination. The classifications are listed in alphabetical order of ""identifiers"" that indicate whether the particular rate is a union rate (current union negotiated rate for local), a survey rate (weighted average rate) or a union average rate (weighted union average rate).

Union Rate Identifiers

A four letter classification abbreviation identifier enclosed in dotted lines beginning with characters other than ""SU"" or ""UAVG"" denotes that the union classification and rate were prevailing for that classification in the survey. Example: PLUM0198-005 07/01/2014. PLUM is an abbreviation identifier of the union which prevailed in the survey for this classification, which in this example would be Plumbers. 0198 indicates the local union number or district council number where applicable, i.e., Plumbers Local 0198. The next number, 005 in the example, is an internal number used in processing the wage determination. 07/01/2014 is the effective date of the most current negotiated rate, which in this example is July 1, 2014.

Union prevailing wage rates are updated to reflect all rate changes in the collective bargaining agreement (CBA) governing this classification and rate.

Survey Rate Identifiers

Classifications listed under the ""SU"" identifier indicate that no one rate prevailed for this classification in the survey and the published rate is derived by computing a weighted average rate based on all the rates reported in the survey for that classification. As this weighted average rate includes all rates reported in the survey, it may include both union and non-union rates. Example: SULA2012-007 5/13/2014. SU indicates the rates are survey rates based on a weighted average calculation of rates and are not majority rates. LA indicates the State of Louisiana. 2012 is the year of survey on which these classifications and rates are based. The next number, 007 in the example, is an internal number used in producing the wage determination. 5/13/2014 indicates the survey completion date for the classifications and rates under that identifier.

Survey wage rates are not updated and remain in effect until a new survey is conducted.

Union Average Rate Identifiers

Classification(s) listed under the UAVG identifier indicate that no single majority rate prevailed for those classifications; however, 100% of the data reported for the classifications was union data. EXAMPLE: UAVG-OH-0010 08/29/2014. UAVG indicates that the rate is a weighted union average rate. OH indicates the state. The next number, 0010 in

the example, is an internal number used in producing the wage determination. 08/29/2014 indicates the survey completion date for the classifications and rates under that identifier.

A UAVG rate will be updated once a year, usually in January of each year, to reflect a weighted average of the current negotiated/CBA rate of the union locals from which the rate is based.

State Adopted Rate Identifiers

Classifications listed under the ""SA"" identifier indicate that the prevailing wage rate set by a state (or local) government was adopted under 29 C.F.R. 1.3(g)-(h). Example: SAME2023-007 01/03/2024. SA reflects that the rates are state adopted. ME refers to the State of Maine. 2023 is the year during which the state completed the survey on which the listed classifications and rates are based. The next number, 007 in the example, is an internal number used in producing the wage determination. 01/03/2024 reflects the date on which the classifications and rates under the ?SA? identifier took effect under state law in the state from which the rates were adopted.

WAGE DETERMINATION APPEALS PROCESS

1.) Has there been an initial decision in the matter? This can be:

- * an existing published wage determination
- * a survey underlying a wage determination
- * a Wage and Hour Division letter setting forth a position on a wage determination matter
- * a conformance (additional classification and rate) ruling

On survey related matters, initial contact, including requests for summaries of surveys, should be with the Wage and Hour National Office because National Office has responsibility for the Davis-Bacon survey program. If the response from this initial contact is not satisfactory, then the process described in 2.) and 3.) should be followed.

With regard to any other matter not yet ripe for the formal process described here, initial contact should be with the Branch of Construction Wage Determinations. Write to:

Branch of Construction Wage Determinations
Wage and Hour Division
U.S. Department of Labor
200 Constitution Avenue, N.W.
Washington, DC 20210

2.) If the answer to the question in 1.) is yes, then an interested party (those affected by the action) can request review and reconsideration from the Wage and Hour Administrator (See 29 CFR Part 1.8 and 29 CFR Part 7). Write to:

Wage and Hour Administrator
U.S. Department of Labor
200 Constitution Avenue, N.W.
Washington, DC 20210

The request should be accompanied by a full statement of the interested party's position and by any information (wage

payment data, project description, area practice material, etc.) that the requestor considers relevant to the issue.

3.) If the decision of the Administrator is not favorable, an interested party may appeal directly to the Administrative Review Board (formerly the Wage Appeals Board). Write to:

Administrative Review Board
U.S. Department of Labor
200 Constitution Avenue, N.W.
Washington, DC 20210

4.) All decisions by the Administrative Review Board are final.

=====

END OF GENERAL DECISION"

PROPOSAL BID ITEMS

241307

Page 1 of 2

Report Date 7/12/24

Section: 0001 - PAVING

LINE	BID CODE	ALT	DESCRIPTION	QUANTITY	UNIT	UNIT PRIC	FP	AMOUNT
0010	00003		CRUSHED STONE BASE	650.00	TON		\$	
0020	00078		CRUSHED AGGREGATE SIZE NO 2	647.00	TON		\$	
0030	00100		ASPHALT SEAL AGGREGATE	1.00	TON		\$	
0040	00103		ASPHALT SEAL COAT	1.00	TON		\$	
0050	00212		CL2 ASPH BASE 1.00D PG64-22	405.00	TON		\$	
0060	00301		CL2 ASPH SURF 0.38D PG64-22	120.00	TON		\$	
0070	02602		FABRIC-GEOTEXTILE CLASS 1	1,207.00	SQYD		\$	
0080	02604		FABRIC-GEOTEXTILE CLASS 1A	1,207.00	SQYD		\$	
0090	20071EC		JOINT ADHESIVE	880.00	LF		\$	
0100	24970EC		ASPHALT MATERIAL FOR TACK NON-TRACKING	1.00	TON		\$	

Section: 0002 - ROADWAY

LINE	BID CODE	ALT	DESCRIPTION	QUANTITY	UNIT	UNIT PRIC	FP	AMOUNT
0110	01000		PERFORATED PIPE-4 IN	64.00	LF		\$	
0120	01010		NON-PERFORATED PIPE-4 IN	12.00	LF		\$	
0130	01028		PERF PIPE HEADWALL TY 3-4 IN	1.00	EACH		\$	
0140	02014		BARRICADE-TYPE III	2.00	EACH		\$	
0150	02091		REMOVE PAVEMENT	853.00	SQYD		\$	
0160	02159		TEMP DITCH	146.00	LF		\$	
0170	02160		CLEAN TEMP DITCH	73.00	LF		\$	
0180	02200		ROADWAY EXCAVATION	929.00	CUYD		\$	
0190	02242		WATER	11.00	MGAL		\$	
0195	02404		SEPTIC TANK TREATMENT (ADDED: 7/12/24)	1.00	EACH		\$	
0200	02429		RIGHT-OF-WAY MONUMENT TYPE 1	8.00	EACH		\$	
0210	02432		WITNESS POST	3.00	EACH		\$	
0220	02483		CHANNEL LINING CLASS II	241.00	TON		\$	
0230	02545		CLEARING AND GRUBBING (APPR 0.7 ACRES)	1.00	LS		\$	
0240	02562		TEMPORARY SIGNS	106.33	SQFT		\$	
0250	02585		EDGE KEY	22.00	LF		\$	
0260	02607		FABRIC-GEOTEXTILE CLASS 2 FOR PIPE	661.00	SQYD	\$2.00	\$	\$1,322.00
0270	02650		MAINTAIN & CONTROL TRAFFIC	1.00	LS		\$	
0280	02696		SHOULDER RUMBLE STRIPS	633.00	LF		\$	
0290	02701		TEMP SILT FENCE	146.00	LF		\$	
0300	02703		SILT TRAP TYPE A	1.00	EACH		\$	
0310	02704		SILT TRAP TYPE B	1.00	EACH		\$	
0320	02705		SILT TRAP TYPE C	1.00	EACH		\$	
0330	02706		CLEAN SILT TRAP TYPE A	1.00	EACH		\$	
0340	02707		CLEAN SILT TRAP TYPE B	1.00	EACH		\$	
0350	02708		CLEAN SILT TRAP TYPE C	1.00	EACH		\$	
0360	02726		STAKING	1.00	LS		\$	
0370	05950		EROSION CONTROL BLANKET	309.00	SQYD		\$	
0380	05952		TEMP MULCH	2,384.00	SQYD		\$	
0390	05953		TEMP SEEDING AND PROTECTION	1,788.00	SQYD		\$	

PROPOSAL BID ITEMS

241307

Page 2 of 2

Report Date 7/12/24

LINE	BID CODE	ALT	DESCRIPTION	QUANTITY	UNIT	UNIT PRIC	FP	AMOUNT
0400	05963		INITIAL FERTILIZER	.10	TON		\$	
0410	05964		MAINTENANCE FERTILIZER	.10	TON		\$	
0420	05985		SEEDING AND PROTECTION	1,821.00	SQYD		\$	
0430	05992		AGRICULTURAL LIMESTONE	1.00	TON		\$	
0440	06401		FLEXIBLE DELINEATOR POST-M/W	4.00	EACH		\$	
0450	06514		PAVE STRIPING-PERM PAINT-4 IN	1,217.00	LF		\$	
0460	06568		PAVE MARKING-THERMO STOP BAR-24IN	27.00	LF		\$	
0470	21289ED		LONGITUDINAL EDGE KEY	124.00	LF		\$	

Section: 0003 - DRAINAGE

LINE	BID CODE	ALT	DESCRIPTION	QUANTITY	UNIT	UNIT PRIC	FP	AMOUNT
0480	00441		ENTRANCE PIPE-18 IN	121.00	LF		\$	
0490	00468		CULVERT PIPE-36 IN	162.00	LF		\$	
0500	24814EC		PIPELINE INSPECTION	162.00	LF		\$	
0510	26211ED		SLOPED AND MITERED HEADWALL-36 IN DBL	2.00	EACH		\$	

Section: 0004 - DEMOBILIZATION

LINE	BID CODE	ALT	DESCRIPTION	QUANTITY	UNIT	UNIT PRIC	FP	AMOUNT
0520	02569		DEMOBILIZATION	1.00	LS		\$	

REVISED JULY 3, 2024

GENERAL SUMMARY

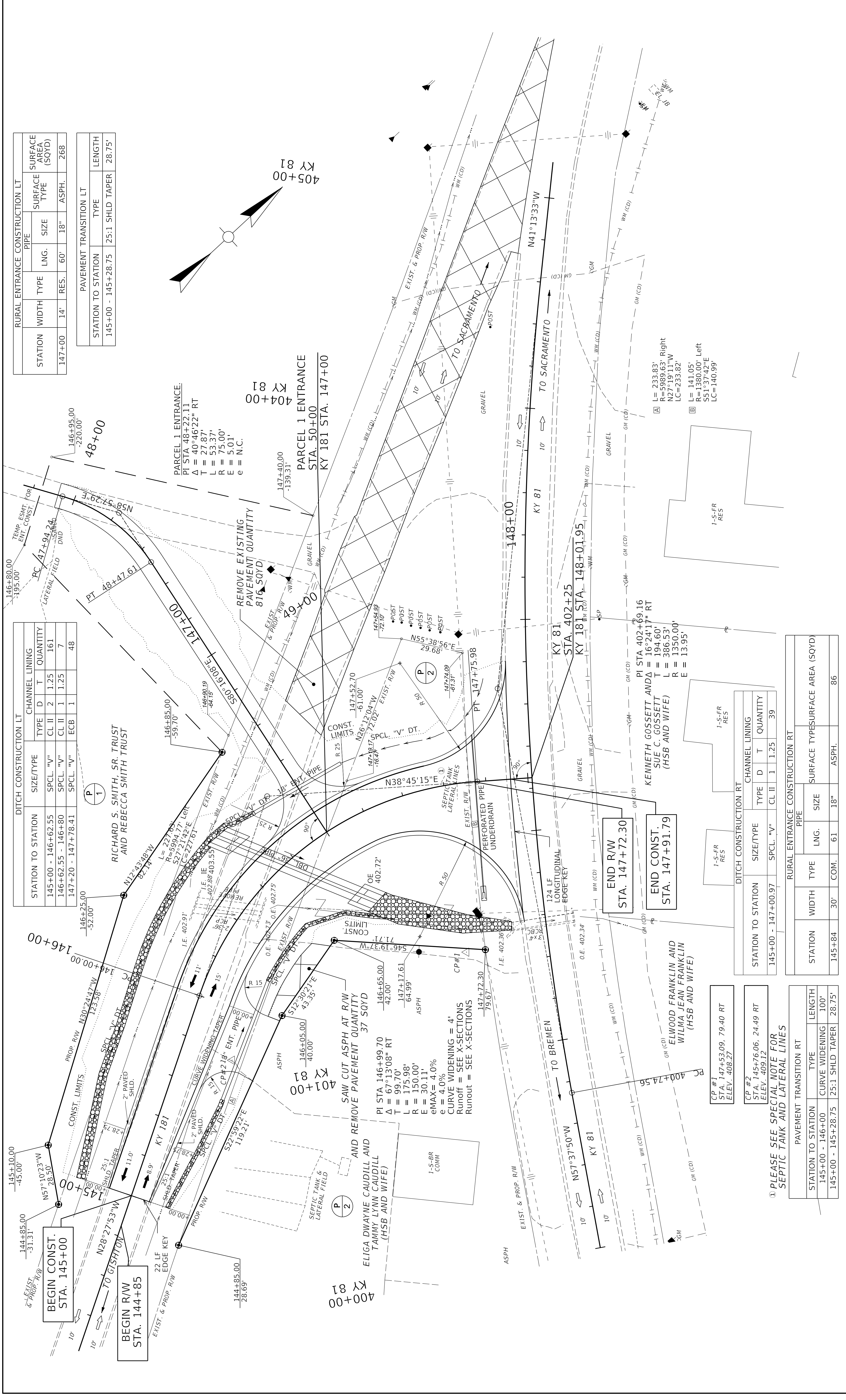
ITEM	DESCRIPTION	NOTES(S)	UNIT	MAINLINE															TOTAL PROJECT
00078	CRUSHED AGGREGATE SIZE NO 2		TON	1															1
01000	PERFORATED PIPE-4 IN		LF	64															64
01010	NON-PERFORATED PIPE-4 IN		LF	12															12
01028	PERF PIPE HEADWALL TY 3-4 IN		EACH	1															1
02014	BARRICADE-TYPE III		EACH	2															2
02091	REMOVE PAVEMENT		SQYD	853															853
02159	TEMP DITCH		LF	146															146
02160	CLEAN TEMP DITCH		LF	73															73
02200	ROADWAY EXCAVATION		CUYD	929															929
02242	WATER		MGAL	11															11
02404	SEPTIC TANK TREATMENT	(1)	EACH	1															1
02429	RIGHT-OF-WAY MONUMENT TYPE 1		EACH	8															8
02432	WITNESS POST		EACH	3															3
02483	CHANNEL LINING CLASS II	(4)	TON	241															241
02545	CLEARING AND GRUBBING	(2)	LS	1															1
02562	TEMPORARY SIGNS		SQFT	106.33															106.33
02569	DEMOBILIZATION		LS	1															1
02585	EDGE KEY		LF	22															22
02607	FABRIC-GEOTEXTILE CLASS 2 FOR PIPE	(3)	SQYD	661															661
02650	MAINTAIN & CONTROL TRAFFIC		LS	1															1
02696	SHOULDER RUMBLE STRIPS		LF	633															633
02701	TEMP SILT FENCE		LF	146															146
02703	SILT TRAP TYPE A		EACH	1															1
02704	SILT TRAP TYPE B		EACH	1															1
02705	SILT TRAP TYPE C		EACH	1															1
02706	CLEAN SILT TRAP TYPE A		EACH	1															1
02707	CLEAN SILT TRAP TYPE B		EACH	1															1
02708	CLEAN SILT TRAP TYPE C		EACH	1															1
02726	STAKING		LS	1															1
05950	EROSION CONTROL BLANKET	(5)	SQYD	309															309
05952	TEMP MULCH		SQYD	2384															2384
05953	TEMP SEEDING AND PROTECTION		SQYD	1788															1788
05963	INITIAL FERTILIZER		TON	0.1															0.1
05964	MAINTENANCE FERTILIZER		TON	0.1															0.1
05985	SEEDING AND PROTECTION		SQYD	1821															1821
05992	AGRICULTURAL LIMESTONE		TON	1															1
06401	FLEXIBLE DELINEATOR POST-M/W		EACH	4															4
06514	PAVE STRIPING-PERM PAINT-4 IN		LF	1217															1217
06568	PAVE MARKING-THERMO STOP BAR-24IN		LF	27															27
21289ED	LONGITUDINAL EDGE KEY		LF	124															124

NOTES:
 EROSION CONTROL QUANTITIES ARE BASED ON THE PROBABLE AMOUNT OF EROSION CONTROL FEATURES AS ESTIMATED BY THE DESIGNER

- ① FOR CONTROLLING DUST CAUSED BY MAINTAINING TRAFFIC ONLY
- ② APPROXIMATELY 0.7 ACRES
- ③ FOR WRAPPING PIPE TRENCH BACKFILL
- ④ INCLUDES THE FOLLOWING:
 34 TONS FROM PIPE SUMMARY
 207 TONS FROM DITCH LINING
- ⑤ INCLUDES THE FOLLOWING:
 261 SQYD FOR SLOPE STABILIZATION
 48 SQYD FROM DITCH LINING

EARTHWORK CALCULATIONS:
 EMBANKMENT:
 182 - CUYD EMB. TOTAL
 EXCAVATION:
 929 - CUYD COM. EXC.
 747 - CUYD EXC. AVAL.

THE EARTHWORK SHOWN ABOVE IS FOR INFORMATION ONLY. ASSUMPTIONS FOR SHRINKAGE AND SWELL FACTORS ARE THE CONTRACTOR'S RESPONSIBILITY.



DITCH CONSTRUCTION LT

STATION TO STATION	SIZE/TYPE	CHANNEL LINING
		D T QUANTITY
145+00 - 146+62.55	SPCL. "V"	CL II 2 1.25 161
146+62.55 - 146+80	SPCL. "V"	CL II 1 1.25 7
147+20 - 147+78.41	SPCL. "V"	ECB 1 48

RURAL ENTRANCE CONSTRUCTION LT

STATION	WIDTH	TYPE	PIPE	PIPE LNG.	SIZE	SURFACE TYPE	SURFACE AREA (SOYD)
147+00	14'	RES.	60"	18"	ASPH.	268	

PAVEMENT TRANSITION LT

STATION TO STATION	TYPE	LENGTH
145+00 - 145+28.75	25:1 SHLD TAPER	28.75'

RICHARD S. SMITH, SR. TRUST
AND REBECCA SMITH TRUST

BEGIN R/W
STA. 144+85

BEGIN CONST.
STA. 145+00

END CONST.
STA. 147+30

END R/W
STA. 147+30

REMOVE EXISTING
PAVEMENT QUANTITY
816 SOYD

REMOVE EXISTING
PAVEMENT QUANTITY
816 SOYD

REMOVE EXISTING
PAVEMENT QUANTITY
816 SOYD

REMOVE EXISTING
PAVEMENT QUANTITY
816 SOYD

REMOVE EXISTING
PAVEMENT QUANTITY
816 SOYD

REMOVE EXISTING
PAVEMENT QUANTITY
816 SOYD

REMOVE EXISTING
PAVEMENT QUANTITY
816 SOYD

REMOVE EXISTING
PAVEMENT QUANTITY
816 SOYD

REMOVE EXISTING
PAVEMENT QUANTITY
816 SOYD

REMOVE EXISTING
PAVEMENT QUANTITY
816 SOYD

REMOVE EXISTING
PAVEMENT QUANTITY
816 SOYD

REMOVE EXISTING
PAVEMENT QUANTITY
816 SOYD

REMOVE EXISTING
PAVEMENT QUANTITY
816 SOYD

REMOVE EXISTING
PAVEMENT QUANTITY
816 SOYD

REMOVE EXISTING
PAVEMENT QUANTITY
816 SOYD

REMOVE EXISTING
PAVEMENT QUANTITY
816 SOYD

REMOVE EXISTING
PAVEMENT QUANTITY
816 SOYD

REMOVE EXISTING
PAVEMENT QUANTITY
816 SOYD

REMOVE EXISTING
PAVEMENT QUANTITY
816 SOYD

REMOVE EXISTING
PAVEMENT QUANTITY
816 SOYD

REMOVE EXISTING
PAVEMENT QUANTITY
816 SOYD

REMOVE EXISTING
PAVEMENT QUANTITY
816 SOYD

REMOVE EXISTING
PAVEMENT QUANTITY
816 SOYD

REMOVE EXISTING
PAVEMENT QUANTITY
816 SOYD

REMOVE EXISTING
PAVEMENT QUANTITY
816 SOYD

REMOVE EXISTING
PAVEMENT QUANTITY
816 SOYD

REMOVE EXISTING
PAVEMENT QUANTITY
816 SOYD

REMOVE EXISTING
PAVEMENT QUANTITY
816 SOYD

REMOVE EXISTING
PAVEMENT QUANTITY
816 SOYD

REMOVE EXISTING
PAVEMENT QUANTITY
816 SOYD

REMOVE EXISTING
PAVEMENT QUANTITY
816 SOYD

REMOVE EXISTING
PAVEMENT QUANTITY
816 SOYD

REMOVE EXISTING
PAVEMENT QUANTITY
816 SOYD

REMOVE EXISTING
PAVEMENT QUANTITY
816 SOYD

REMOVE EXISTING
PAVEMENT QUANTITY
816 SOYD

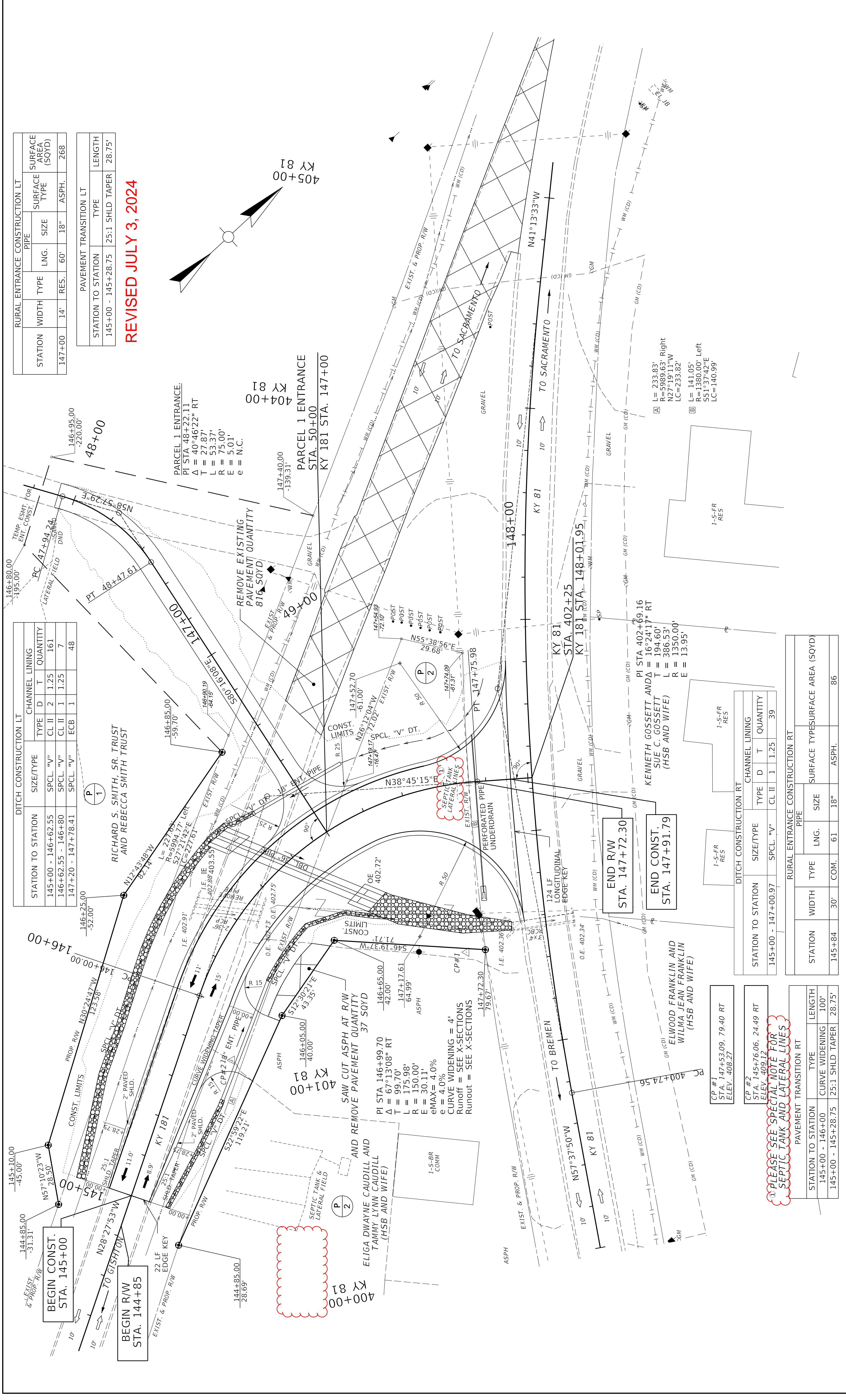
REMOVE EXISTING
PAVEMENT QUANTITY
816 SOYD

REMOVE EXISTING
PAVEMENT QUANTITY
816 SOYD

REMOVE EXISTING
PAVEMENT QUANTITY
816 SOYD

REMOVE EXISTING
PAVEMENT QUANTITY
816 SOYD

REMOVE EXISTING
PAVEMENT QUANTITY
816 SOYD



DITCH CONSTRUCTION LT			CHANNEL LINING		
STATION TO STATION	SIZE/TYPE	TYPE	D	T	QUANTITY
145+00 - 146+62.55	SPCL. "V"	CL II	2	1.25	161
146+62.55 - 146+80	SPCL. "V"	CL II	1	1.25	7
147+20 - 147+78.41	SPCL. "V"	ECB	1		48

RURAL ENTRANCE CONSTRUCTION LT						
STATION	WIDTH	TYPE	PIPE	SIZE	SURFACE TYPE	SURFACE AREA (SOYD)
147+00	14'	RES.	60"	18"	ASPH.	268

PAVEMENT TRANSITION LT		
STATION TO STATION	TYPE	LENGTH
145+00 - 145+28.75	25:1 SHLD TAPER	28.75'

REVISED JULY 3, 2024

DITCH CONSTRUCTION RT			CHANNEL LINING		
STATION TO STATION	SIZE/TYPE	TYPE	D	T	QUANTITY
145+00 - 147+00.97	SPCL. "V"	CL II	1	1.25	39

RURAL ENTRANCE CONSTRUCTION RT						
STATION	WIDTH	TYPE	PIPE	SIZE	SURFACE TYPE	SURFACE AREA (SOYD)
145+84	30'	COM.	61"	18"	ASPH.	86

PAVEMENT TRANSITION RT		
STATION TO STATION	TYPE	LENGTH
145+00 - 146+00	CURVE WIDENING	100'
145+00 - 145+28.75	25:1 SHLD TAPER	28.75'

RURAL ENTRANCE CONSTRUCTION LT						
STATION	WIDTH	TYPE	PIPE	SIZE	SURFACE TYPE	SURFACE AREA (SOYD)
147+00	14'	RES.	60"	18"	ASPH.	268

PAVEMENT TRANSITION LT		
STATION TO STATION	TYPE	LENGTH
145+00 - 145+28.75	25:1 SHLD TAPER	28.75'

RURAL ENTRANCE CONSTRUCTION RT						
STATION	WIDTH	TYPE	PIPE	SIZE	SURFACE TYPE	SURFACE AREA (SOYD)
147+00	14'	RES.	60"	18"	ASPH.	268

PAVEMENT TRANSITION RT		
STATION TO STATION	TYPE	LENGTH
145+00 - 146+00	CURVE WIDENING	100'
145+00 - 145+28.75	25:1 SHLD TAPER	28.75'

RURAL ENTRANCE CONSTRUCTION LT						
STATION	WIDTH	TYPE	PIPE	SIZE	SURFACE TYPE	SURFACE AREA (SOYD)
147+00	14'	RES.	60"	18"	ASPH.	268

PAVEMENT TRANSITION LT		
STATION TO STATION	TYPE	LENGTH
145+00 - 145+28.75	25:1 SHLD TAPER	28.75'

RURAL ENTRANCE CONSTRUCTION RT						
STATION	WIDTH	TYPE	PIPE	SIZE	SURFACE TYPE	SURFACE AREA (SOYD)
147+00	14'	RES.	60"	18"	ASPH.	268

PAVEMENT TRANSITION RT		
STATION TO STATION	TYPE	LENGTH
145+00 - 146+00	CURVE WIDENING	100'
145+00 - 145+28.75	25:1 SHLD TAPER	28.75'

RURAL ENTRANCE CONSTRUCTION LT						
STATION	WIDTH	TYPE	PIPE	SIZE	SURFACE TYPE	SURFACE AREA (SOYD)
147+00	14'	RES.	60"	18"	ASPH.	268

PAVEMENT TRANSITION LT		
STATION TO STATION	TYPE	LENGTH
145+00 - 145+28.75	25:1 SHLD TAPER	28.75'

RURAL ENTRANCE CONSTRUCTION RT						
STATION	WIDTH	TYPE	PIPE	SIZE	SURFACE TYPE	SURFACE AREA (SOYD)
147+00	14'	RES.	60"	18"	ASPH.	268

PAVEMENT TRANSITION RT		
STATION TO STATION	TYPE	LENGTH
145+00 - 146+00	CURVE WIDENING	100'
145+00 - 145+28.75	25:1 SHLD TAPER	28.75'

RURAL ENTRANCE CONSTRUCTION LT						
STATION	WIDTH	TYPE	PIPE	SIZE	SURFACE TYPE	SURFACE AREA (SOYD)
147+00	14'	RES.	60"	18"	ASPH.	268

PAVEMENT TRANSITION LT		
STATION TO STATION	TYPE	LENGTH
145+00 - 145+28.75	25:1 SHLD TAPER	28.75'

RURAL ENTRANCE CONSTRUCTION RT						
STATION	WIDTH	TYPE	PIPE	SIZE	SURFACE TYPE	SURFACE AREA (SOYD)
147+00	14'	RES.	60"	18"	ASPH.	268

PAVEMENT TRANSITION RT		
STATION TO STATION	TYPE	LENGTH
145+00 - 146+00	CURVE WIDENING	100'
145+00 - 145+28.75	25:1 SHLD TAPER	28.75'

RURAL ENTRANCE CONSTRUCTION LT						
STATION	WIDTH	TYPE	PIPE	SIZE	SURFACE TYPE	SURFACE AREA (SOYD)
147+00	14'	RES.	60"	18"	ASPH.	268

PAVEMENT TRANSITION LT		
STATION TO STATION	TYPE	LENGTH
145+00 - 145+28.75	25:1 SHLD TAPER	28.75'